

# Stronger and Safer Communities

**Nicola Perry**  
Partnership Manager  
Luton CDRP

**John Harper**  
Head of Local Democracy  
Luton Borough Council



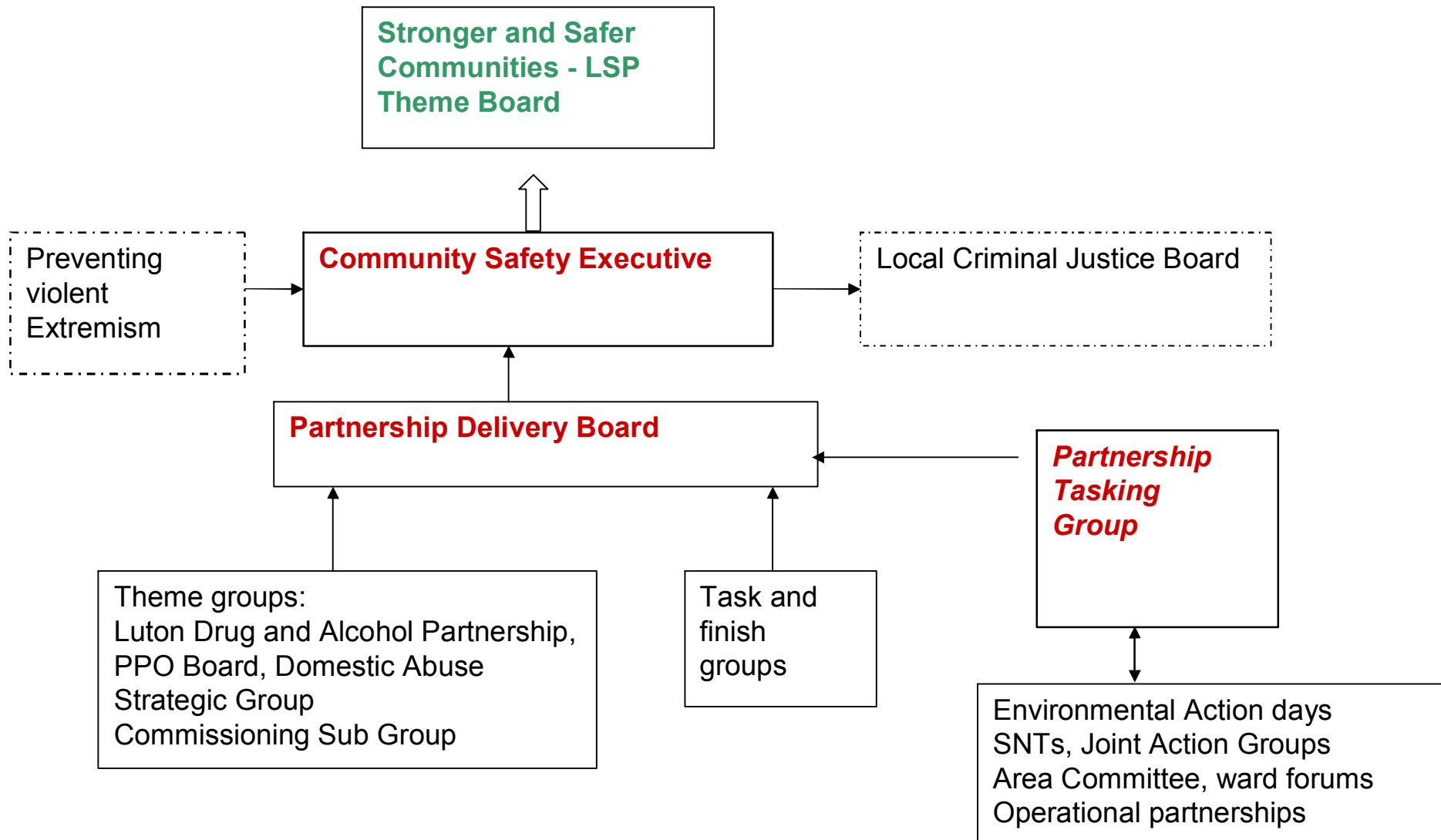
# Introduction

- CDRP – at a glance
- The new structure
- Our strategic priorities
- Crime picture and public perceptions
- Public perceptions
- Celebrating success
- Challenges and next steps
- Preventing violent extremism
- Stronger communities

# CDRP – at a glance

- Police, Police Authority, Local Authority, Fire and Rescue, PCT, Probation Service, Voluntary and Community Sector
- Prepare and implement a strategic assessment and partnership plan
- 2007 – poorly performing
- Home Office Partnership Support Programme
  - New structure and governance arrangements
  - Appointment of dedicated resources
  - Robust strategic assessment and information sharing
  - Commissioning process
  - Communications strategy
  - Forge links with voluntary and community sector
  - Develop knowledge and skills of partners

# Revised structure



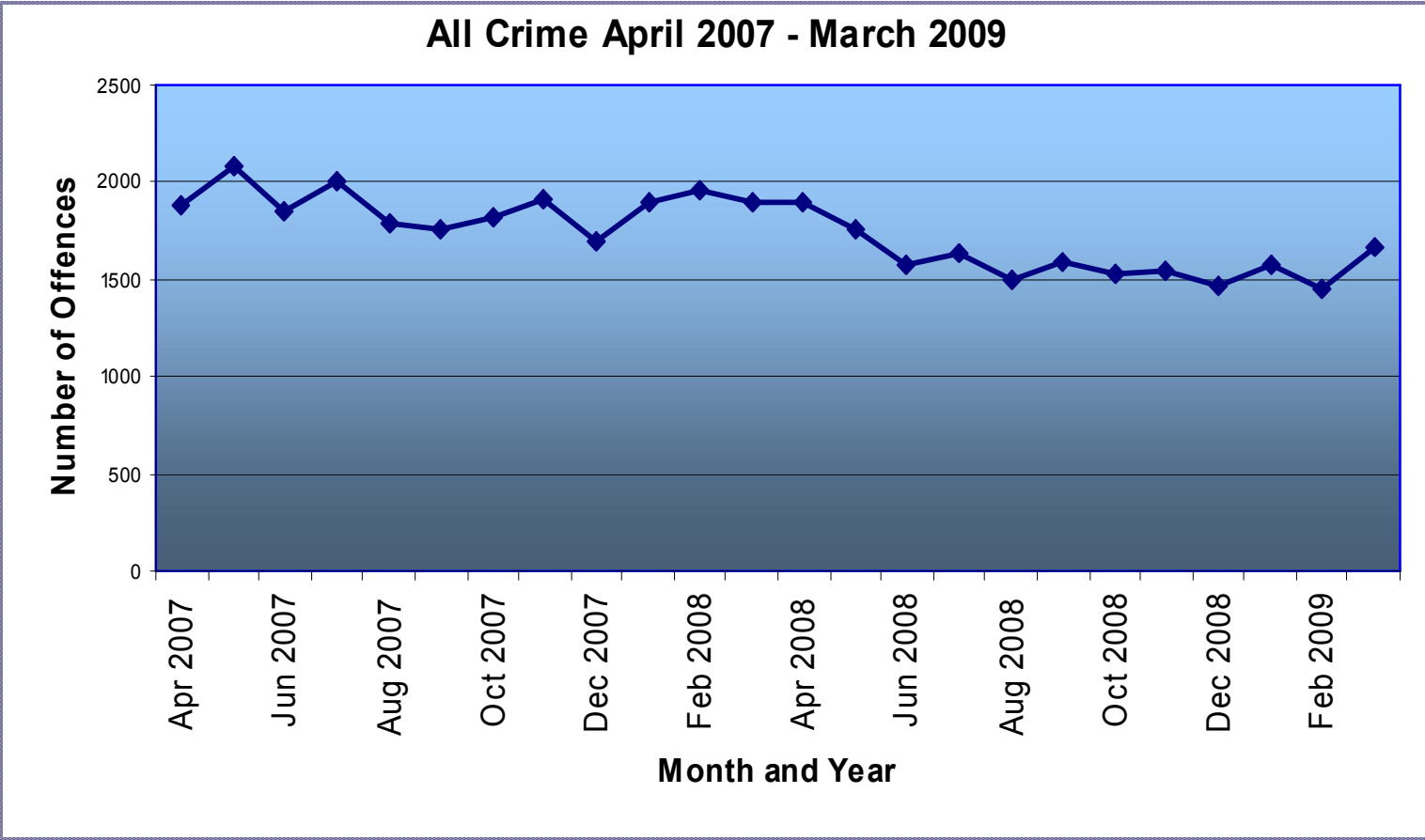
# Our priorities

- Domestic Burglary
  - Anti-Social Behaviour
  - Drugs and Alcohol
  - Theft from Motor Vehicle
  - Criminal Damage
  - Violence Against the Person
  - Robbery
- And.....
- Improving public confidence

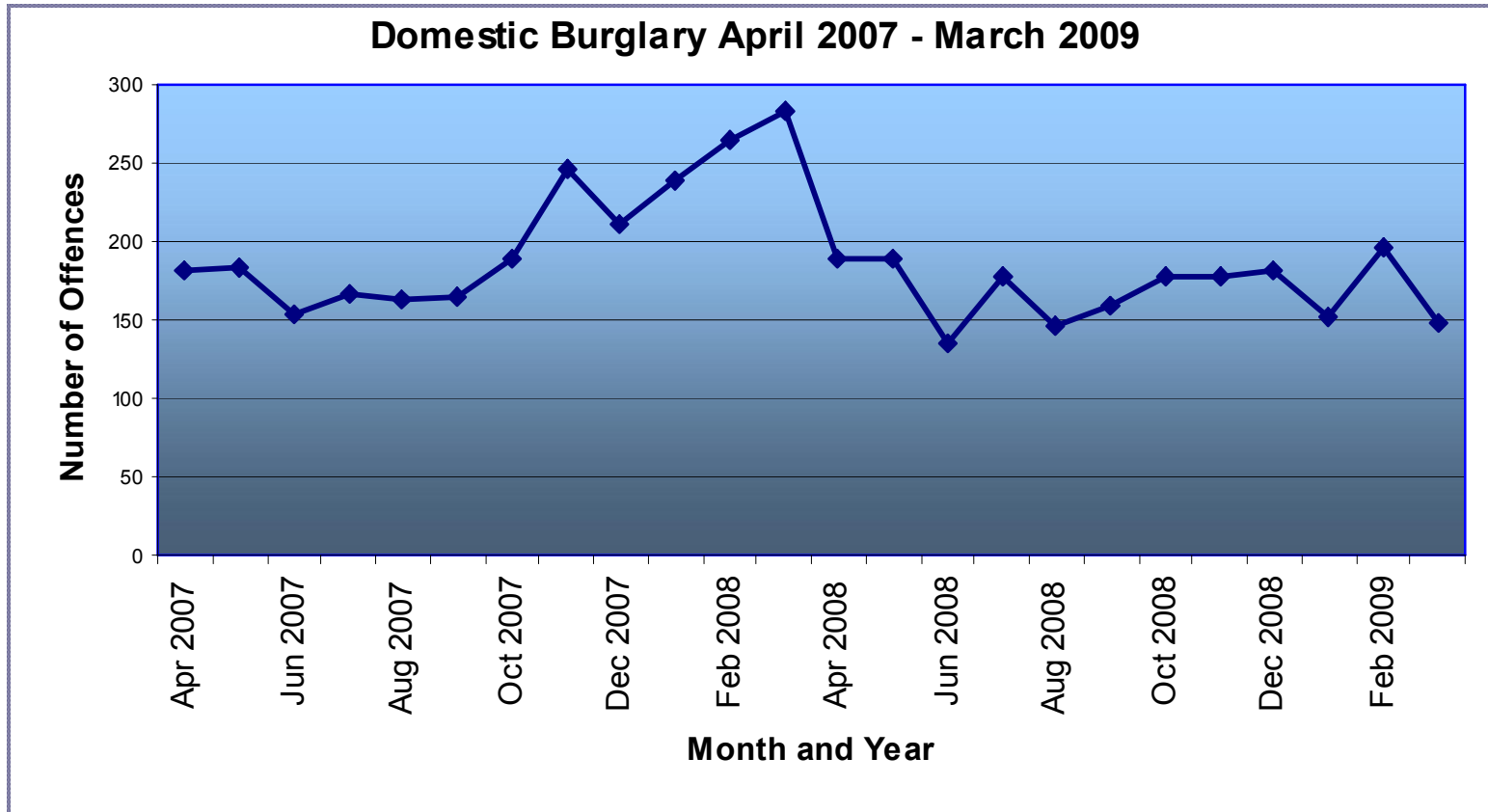
# Local Area Agreement (safer)

- NI15 – Serious violent crime
- NI 16 – Serious acquisitive crime
- NI 17 – Perceptions of anti-social behaviour
- NI 19 (local) – Rate of proven re-offending by young offenders
- NI 21 – (local) – Dealing with local concerns about anti-social behaviour and crime issues by the local council and police
- NI 23 – Perceptions that people in the area treat one another with respect and consideration
- NI 30 – Re-offending rate of prolific and priority offenders
- NI 32 – Repeat incidents of domestic violence
- NI 39 – Rate of hospital admissions per 100,000 for alcohol related harm
- NI 111 – First time entrants to the Youth Justice System aged 10-17
  
- Performance is also comparative (MSG)

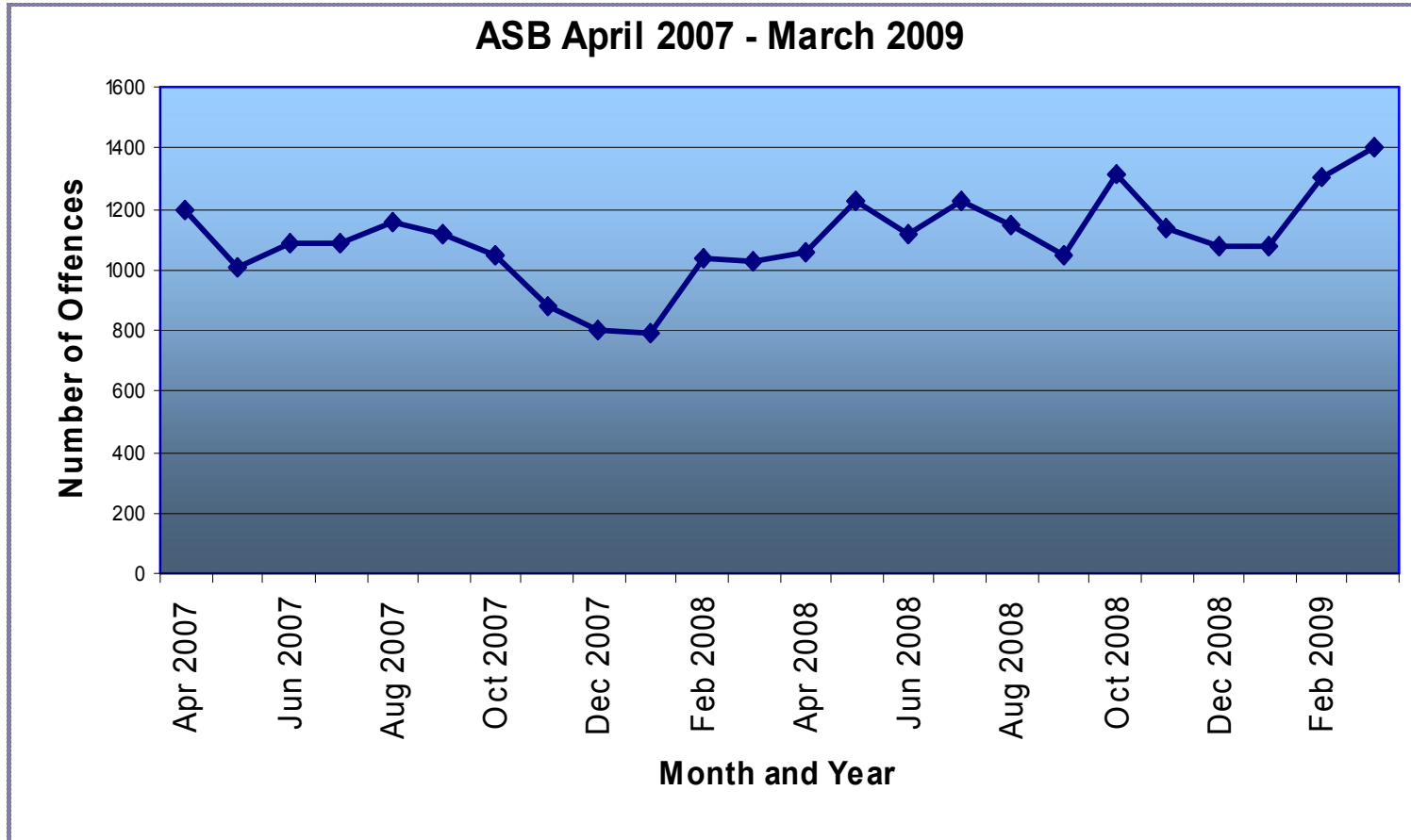
# Overall crime (-15%)



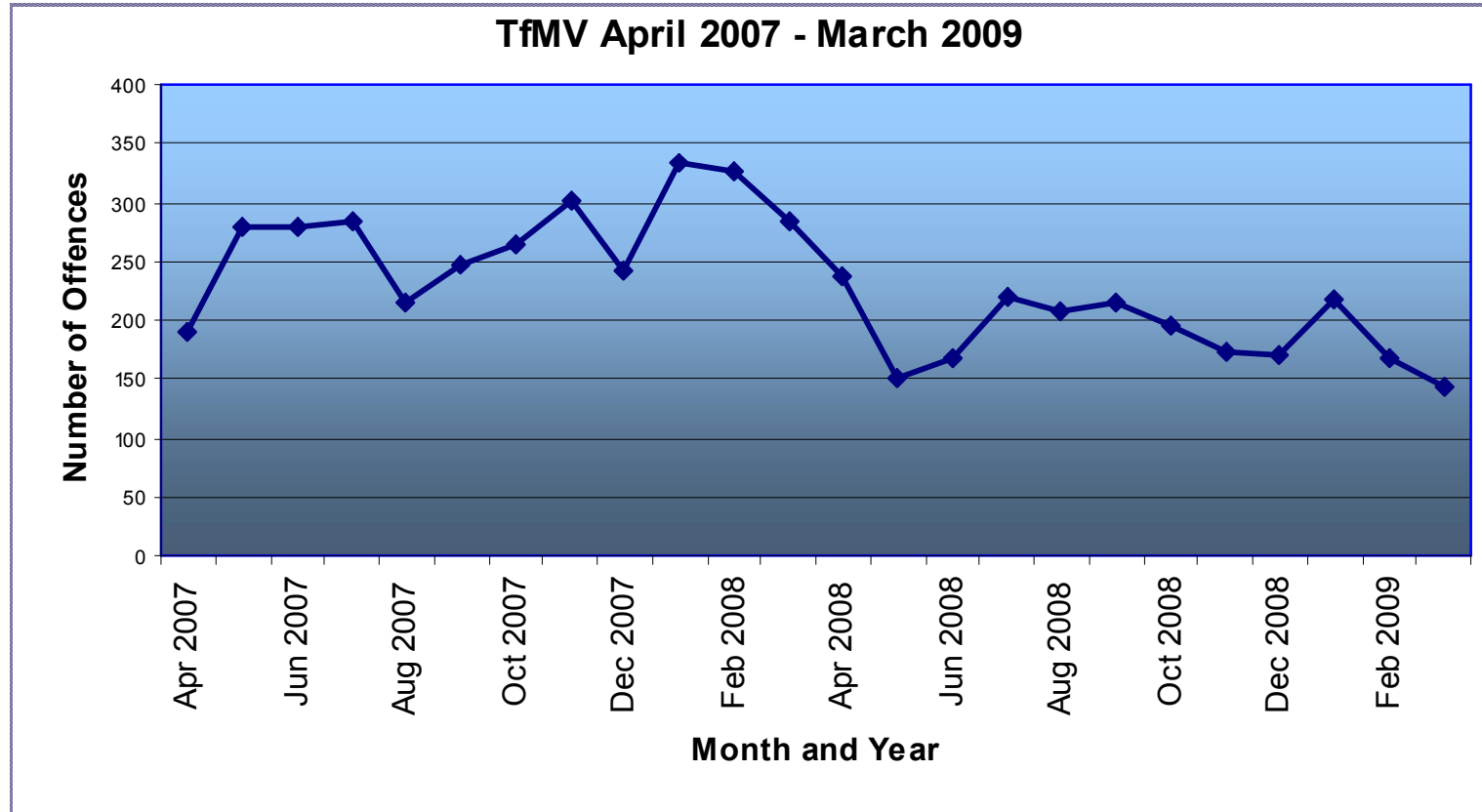
# Domestic Burglary (-17%)



# Anti-social behaviour (16%)



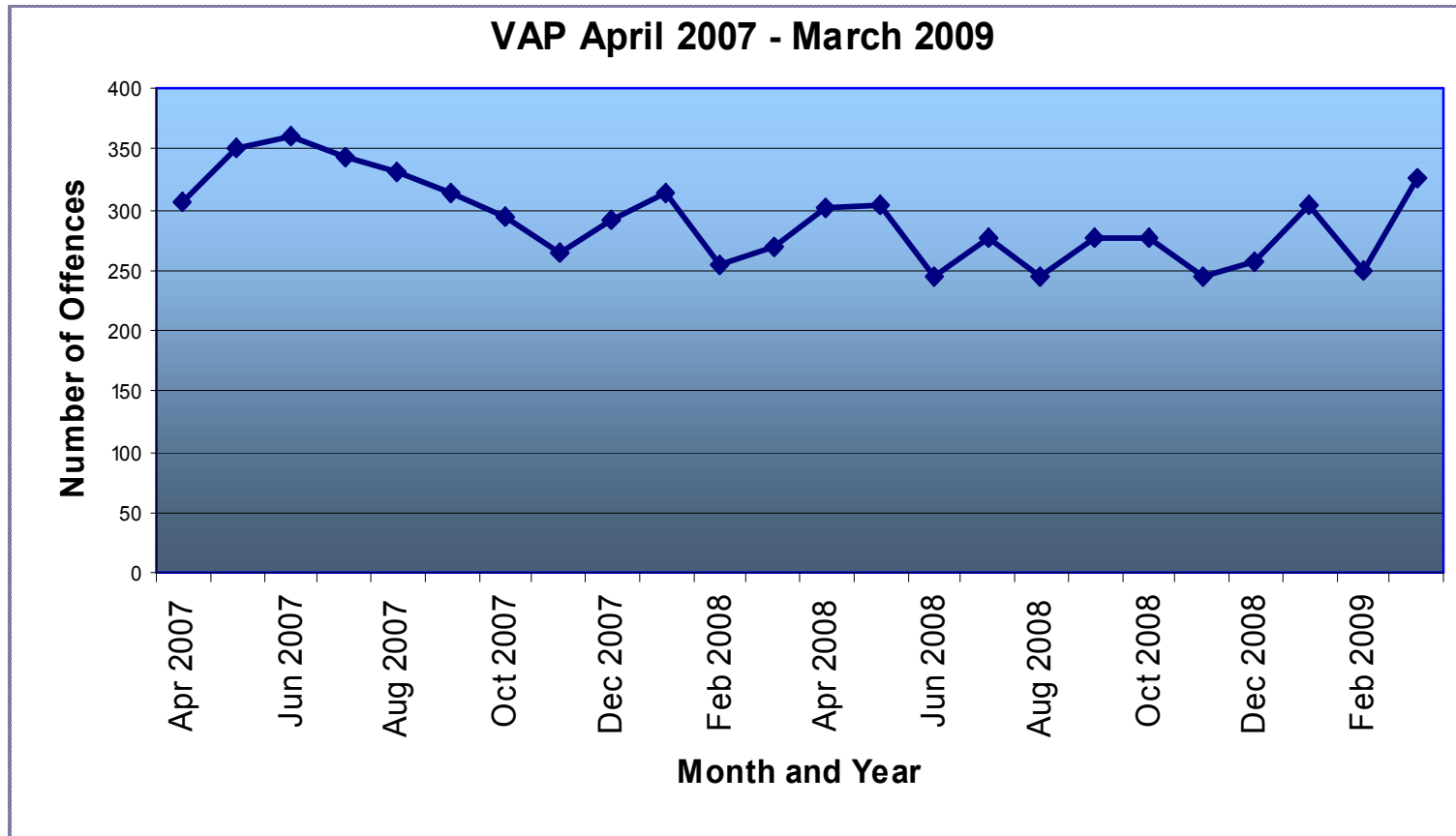
# Theft from a motor vehicle (-30%)



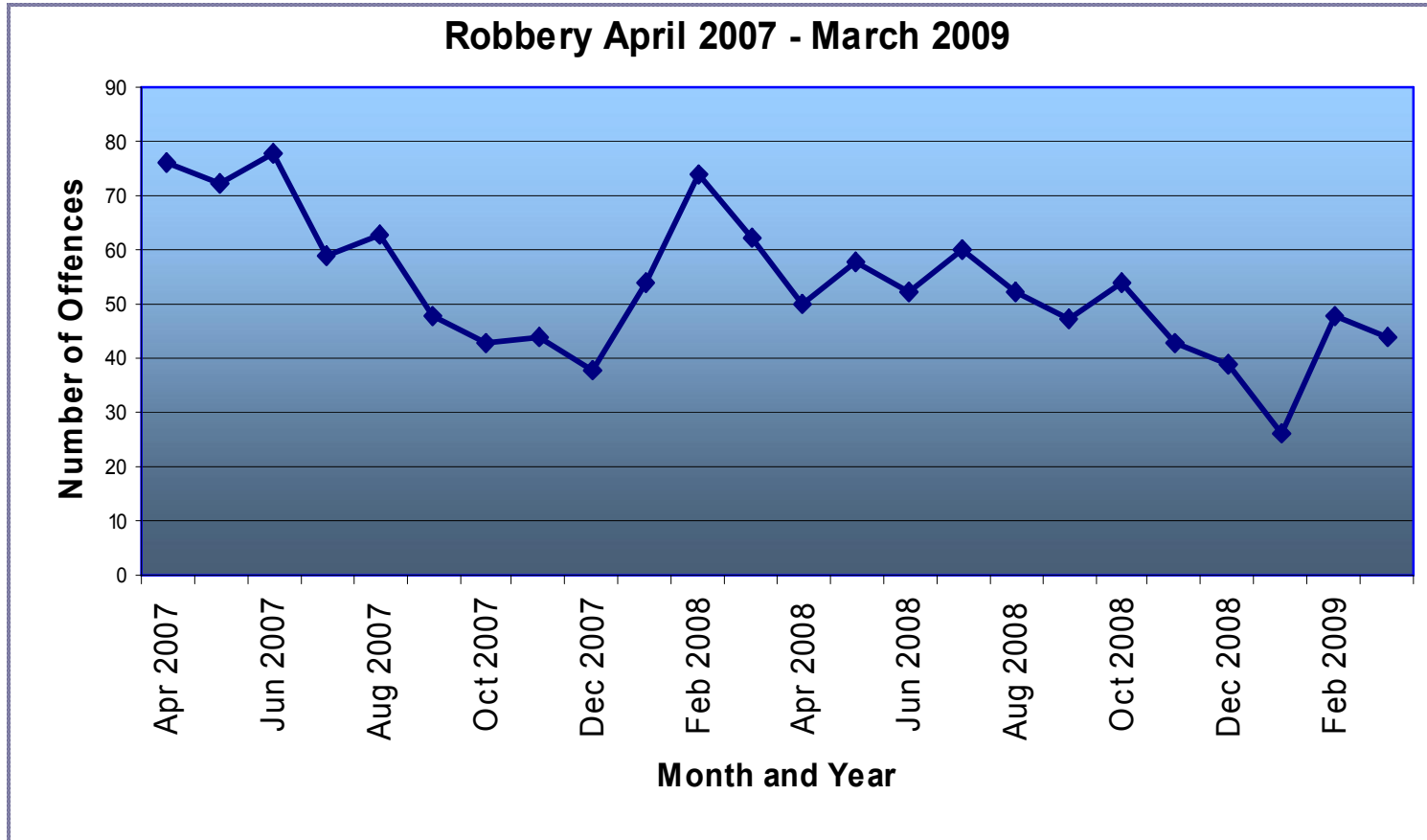
# Criminal damage (-9%)



# Violence against the person (-10%)



# Robbery (-19%)



# Performance

- Trend
- Local Area Agreement
- Comparative – Home Office Most Similar Group
- Local perceptions

# Local views

- Perceptions of safety outside in the local area:
  - After dark = 45% feel unsafe
  - During the day = 10% feel unsafe
- Perceptions of crime (fairly / very big problem in the local area)
  - Burglary = 47%
  - Vehicle crime = 45%
  - Robbery = 40%
  - Violent crime = 31%
- Level of crime in the local area in the last 3 years:
  - Better = 5%
  - Stayed the same = 39%
  - Worse = 36%
  - Don't know = 20%

# Perceptions of ASB (NI 17)

<b>Very / fairly big problems %</b>	<b>2003</b>	<b>2006</b>	<b>2008</b>
Noisy neighbours	30	22	15
Teenagers hanging around on the streets	70	60	55
Rubbish or litter lying around	62	51	37
Vandalism, graffiti and other deliberate damage to property or vehicles	74	44	41
People using or dealing drugs	81	52	46
People being drunk or rowdy in public places	67	30	36
Abandoned or burnt out vehicles	78	20	14

# Progress

- Fit for purpose structure and governance arrangements, including fortnightly Partnership Tasking Group
- Investment in staff training and development
- Getting to grips with the performance management agenda

# Celebrating partnership success

- Neighbourhood Crime and Justice Pioneer Area
- SoLUTiONs
- Operation Butler – noise nuisance partnership
- Town centre Triage / Winter Alcohol Project
- Investment in target hardening
- Co-location

# Our challenges and next steps

- Burglary reduction and serious violent crime
- Achieving our LAA targets and improving performance
- Implementing the new Partnership Plan and commissioning process
- Building the knowledge and skills of partners – more training, handbook, website
- Involving the third sector
- Building public confidence:
  - Communication
  - Developing a brand and reputation
  - Celebrating successes!

# Preventing Violent Extremism in Luton

## Prevent Strategy

- Challenge the violent extremist ideology and support mainstream voices;
- Disrupt those who promote violent extremism and support the institutions where they are active;
- Support individuals who are being targeted and recruited to the cause of violent extremism;

# Preventing Violent Extremism in Luton

## Prevent Strategy

- Increase the resilience of communities to violent extremism;
- Address the grievances which ideologues are exploiting;

# Preventing Violent Extremism in Luton

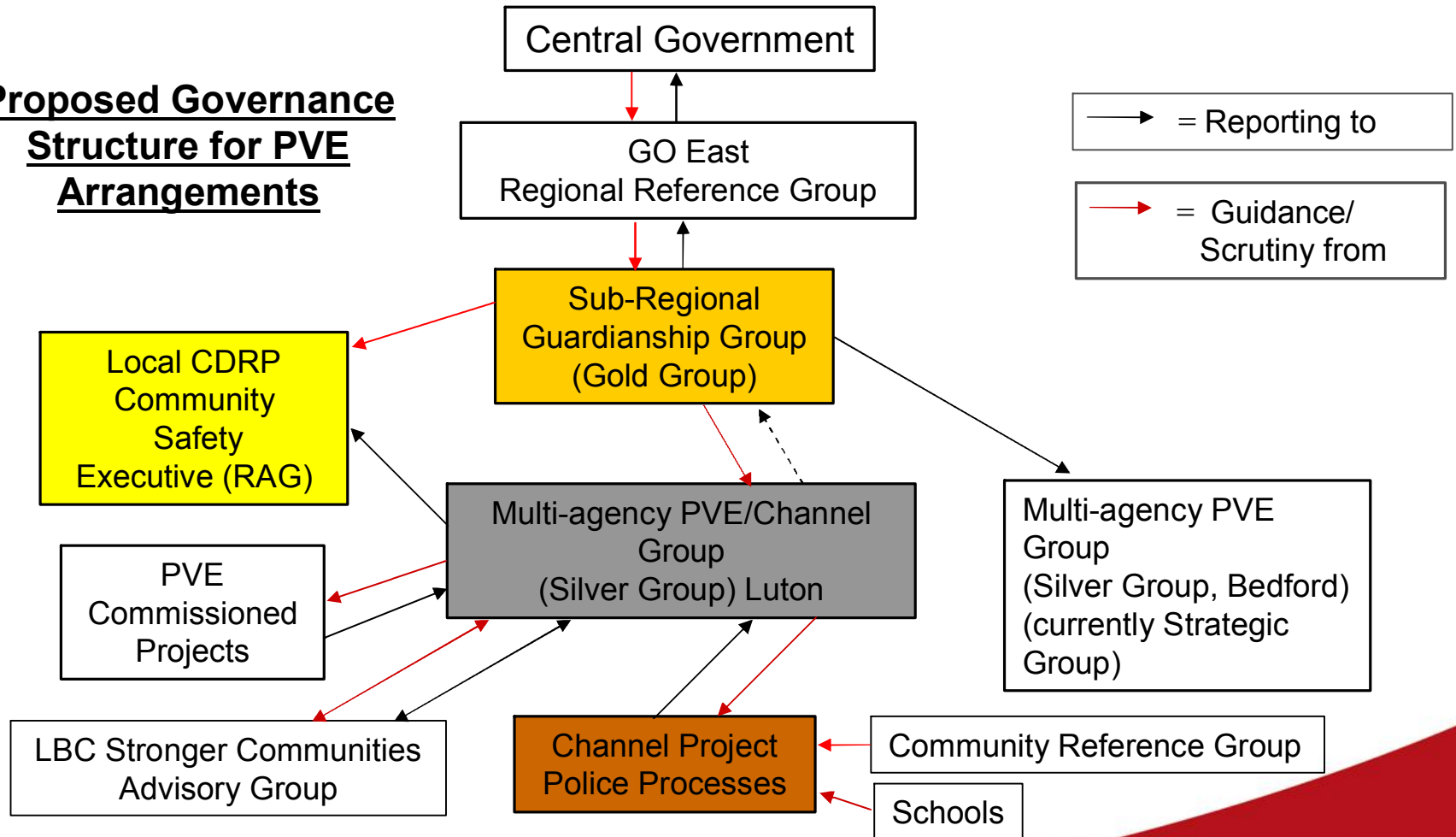
## Several different funding streams

- Project Channel
- YJB
- Community Leadership Fund
- PVE Grant

= need for coordination and clear governance

# Preventing Violent Extremism in Luton

## Proposed Governance Structure for PVE Arrangements



# Preventing Violent Extremism in Luton

## Stage 1 (2008/09)

- Inter-faith dialogue
- Citizenship Education
- Youth and Community Engagement
- Women's Inclusion
- Muslims in Luton Research and Engagement

# Preventing Violent Extremism in Luton

## Stage 2 (2009/11)

- Women's Inclusion
- Schools
- Further and Higher education
- Vulnerable individuals

# Preventing Violent Extremism in Luton

- Muslim Education Forum
- Schools (Knowing Me Knowing You)
- Hear My Voice
- Mitalee Youth Association
- Training Voluntary Youth Leaders
- Bangladeshi Youth League - CYCD
- Establishment of Women's Network
- Dallow Development Trust
- Provision of courses

# Preventing Violent Extremism in Luton

- Islamic Society of Britain
- Workshops and courses for young people
- Creative Vision
- Workshops with youth on PVE used to inform and make a short film
- Muslim Education Forum
- (Role Models – Leading Lights)
- Creative Workshops in Schools
- Developing Brighter Futures
- Working with trade unions on development skills to address grievances

# Preventing Violent Extremism in Luton

- Developing Brighter Futures
- Delivering workshops and assemblies in schools.
- Muslim Education Forum
- Empowerment of women, training and development

# Stronger Communities

## National Indicators

- NI 1 - % of people who believe people from different backgrounds get on well together in their local area
- NI 2 - % of people who feel that they belong to their neighbourhood
- NI 3 – Civic participation in the local area
- NI 4 - % of people who feel they can influence decisions in their locality
- NI 5 – Overall/general satisfaction with local area
- NI 6 – Participation in regular volunteering
- NI 7 – Environment for a thriving third sector

# Stronger Communities

## National Indicators

- NI 8 – Adult participation in sport, and active recreation
- NI 9 – Use of public libraries
- NI 10 – Visits to museums and galleries
- NI 11 – Engagement in the Arts
- NI 12 – Refused and deferred houses in multiple occupation, license applications leading to immigration enforcement activity
- NI 13 – Migrants English language skills and knowledge
- NI 14 – Reducing avoidable contact: minimising the proportion of customer contact that is of low or no value to the customer

# Challenge Index

We have, in the spirit of the comprehensive area assessment, looked across key measures in the Place Survey to see what background characteristics are consistently associated with making satisfaction hard to achieve, and have created the Ipsos MORI Area Challenge Index (see boxes on the right).

This is made up of seven domains, including deprivation levels, ethnic diversity, the proportion of young people and population churn. From this we can create 'challenge' scores on a scale from 1 to 100 for each local authority area, measuring how difficult it is for them to achieve high ratings on satisfaction measures. Our initial analysis suggests that Luton is amongst the 5 most challenged areas.

Authority	Index
Manchester City	72
Blackburn with Darwen	72
Birmingham City	72
Leicester City	71
Luton	70

# Challenges and opportunities

- Third Sector Review
- NI 4 – second best performance in Eastern Region
- Partnership Governance Pilot – West Area
- Partnership and Engagement Strategy
- Community Cohesion Commission
- Scrutiny Review
- Funding
- Stronger version of the Community Safety Executive

**Thank you**  
**Questions?**