



## LUTON FORUM

10 September 2009  
2:00 pm

Hat Factory  
Bute Street  
Luton

### AGENDA

1. **Apologies**
2. **Minutes of the previous meetings:**  
2.1 **Special Meeting 11<sup>th</sup> June 2009**  
*(Attached) For agreement.*
3. **Matters Arising.**
4. **Disclosures of Interests**  
Members are reminded that they must disclose both the existence and the nature of any personal interest that that they may have in any matter to be considered at this meeting. A member who has a prejudicial interest must withdraw from the meeting room while the matter is being discussed.
5. **Total Place**  
*(Presentation) Steve Heappey, Director of Corporate and Customer Services, Luton Borough Council, to present. For information.*
6. **Draft Equality, Cohesion and Inclusion Statement and proposal to develop Equality, Cohesion and Inclusion Strategy for the Luton Forum**  
*(Report attached) Sarah Allen, Inclusion and Cohesion Manager, Luton Borough Council to present. For agreement and action.*

7. **Luton in Harmony**  
*(Report attached) Sarah Allen, Inclusion and Cohesion Manager, Luton Borough Council to present. For agreement and action.*
8. **Child Poverty Bill and likely Local Authorities' and Partner Agencies' Statutory Responsibilities**  
*(Report attached) Jenny Coles, Head of Area Integrated Services, Luton Borough Council, to present. For agreement and action.*
9. **Referral from Luton Borough Council Executive: Luton Equalities Agency**  
*(Report attached) John Harper Head of Local Democracy, Luton Borough Council to present. For action.*
10. **Active Luton – Change 4 Life**  
*Helen Barnett, Chief Executive, Active Luton, to present. For information.*
11. **Transformation of Adult Social Care**  
*Presentation. Roger Kirk, Business Redesign and Self Direct Support Manager, Luton Borough Council to present. For information and discussion.*
12. **NHS Priorities - Transforming Primary and Community Services.**  
*(Presentation) Sean Barnett, Project Lead NHS Luton to present. For information and discussion.*
13. **Theme Board reports**  
*(Verbal updates) Chairs of Theme Boards*
14. **LSP Manager's report**  
*(Report attached) Bren McGowan, LSP Manager to present. For information.*

## **LUTON FORUM SPECIAL MEETING**

**Thursday 11<sup>th</sup> June 2009  
2.20 pm at AW House, Stuart Street, Luton**

### **PRESENT: MEMBERS**

Councillor Hazel Simmons – Luton Borough Council – Chair  
Andy Calvert – Luton Assembly – Vice-Chair  
Kevin Crompton – Chief Executive, Luton Borough Council  
Councillor Roy Davies – Luton Borough Council  
Catherine Govier – Bedfordshire Police  
Andy Frost – Bedfordshire Police  
Neil Hadden – Aldwyck Housing Association  
Helen Barnett – Active Luton  
Gillian Sharp – Luton Law Centre  
Penny Furness-Smith – Chair, Health and Well-Being Board  
David Oakley-Hill – Luton Assembly  
Anwar Haque – Luton Assembly  
Everton Blake – Voluntary Action Luton  
Linda Farrell – Luton Assembly  
Anwar Haque – Luton Assembly  
Janet Montgomery – Luton Assembly  
Jenny Spouge – Luton Assembly

### **SUBSTITUTES FOR MEMBERS**

Laura Church (substitute for Colin Chick)

### **SUPPORT OFFICERS/ADVISORS**

Bren McGowan – LSP Manager, Luton Borough Council  
Alice Abida – LSP Support Officer, Luton Borough Council  
Lachlan Robertson, Joint Technical Unit Manager, Strategic Planning  
Lisa Jerome – Democratic Services, Luton Borough Council

### **1 APOLOGIES FOR ABSENCE (REF: 1)**

Apologies for absence from the meeting were received on behalf of Councillor Sian Timoney (Fire Authority), Lorna Brown (Luton Assembly) Lysle Osborne (Marsh Farm Community Development Trust), David Barrett (University of Bedfordshire), Dave Fothergill (Beds and Luton Fire and Rescue Service), Colin Chick (Chair Economy and Environment Board), Angela McNab (NHS Luton), Craig Smith (Learning and Skills Council)

## **5 CORE STRATEGY**

Lachlan Robertson, Joint Technical Unit Manager, Strategic Planning, Luton Borough Council gave a presentation on the Luton and South Bedfordshire Joint committee Core Strategy Preferred Options. The forum noted that the Strategy had also been considered by the Environment and Economy Theme Board at its meeting on 14<sup>th</sup> May.

The Forum considered and identified the key issues relating to the Core Strategy with particular reference to how these related to the priorities listed in the Sustainable Community Strategy.

Forum members broadly supported and recognised the need for the Core Strategy. Members considered that there should be a strengthening of the links between the spatial elements and the health, wellbeing and community safety aspects of the Core Strategy.

Key areas of concern were also identified which are set out below against the individual Core Strategy Options.

### **Preferred Option CS1 – Spatial Development Strategy**

Whilst recognising the importance of transport infrastructure, the Forum expressed some concerns about how transport infrastructure could be delivered and whether it would deliver the expected benefits.

There was not consensus across Forum members on the proposal for 5,500 new dwellings for the East of Luton, based on both the negative impact of proposed development as well as concerns about the reliance on a neighbouring authority.

The Forum expressed strong support for sustainable transport, including improved public transport, but there was concern strongly expressed by some members that the Luton-Dunstable Busway was not the most suitable option, and might not deliver the proposed benefits.

The Forum noted that the planning for the implementation to the East of Leighton Buzzard specifically included “providing further high quality open space and green linkages to the countryside”, and felt that this principle should also be included in proposals relating to Luton.

Although the Luton Forum recognised the linkages to existing strategic documents (Milton Keynes and South Midlands Sub Regional Strategy, Regional Spatial Strategy etc), there was some concern about the implications of the local delivery of targets, and how these would relate to the priorities of the Sustainable Community Strategy. Under these circumstances, the Luton Forum supported the broad principles of Preferred Option CS 1.

## **Preferred Option CS 2 – Developer Contributions and the Delivery of Supporting Infrastructure**

Luton Forum supported Preferred Option CS 2.

## **Preferred Option CS 3 – Strategic Public Transport Infrastructure**

The Luton Forum supported the broad principles expressed in the Preferred Option CS 3, however, there were some areas of concern. The Luton Dunstable Busway was not supported by the entire Luton Forum. There were further concerns that this section should have a clearer commitment to sustainable travel.

## **Preferred Option CS 4 – Strategic Highway Transport Infrastructure**

The Luton Forum supported the broad principles of Preferred Option CS 4, but had concerns about the impact of specific schemes, particularly the A5 – M1 Link Road and other ring roads and the impact that these would have, both on the area and on the promotion of sustainable travel.

## **Preferred Option CS 5 – Maximising Opportunities for Sustainable Travel**

Luton Forum supported Preferred Option CS 5.

## **Preferred Option CS 6 – Meeting the Housing Targets**

The Luton Forum recognised the need to meet housing targets, and the need to ensure that housing was available where it was needed. Although the Luton Forum could support the broad principles, it was felt that more detail would be required.

## **Preferred Option CS 7 – Delivering a Constant Supply of Housing Land**

Luton Forum supported Preferred Option CS 7 although it should be made clear that this related to the proposals within the plan, and was not an open-ended commitment.

## **Preferred Option CS 8 – Providing Housing for all Needs**

Luton Forum supported Preferred Option CS 8.

## **Preferred Option CS 9 – Providing a Supportive Framework**

Luton Forum supported Preferred Option CS 9.

## **Preferred Option CS 10 – Providing Social and Community Infrastructure**

Luton Forum supported Preferred Option CS 10.

## **Preferred Option CS 11 – Improving Town Centres**

This Option was partly supported by the Luton Forum. There was a mixed view about the scale of retail development, and the requirements for Luton. Some members of the Forum felt that there should be no further retail development in Luton. There was also concern about the impact of town centre development on local areas, and whether town centre development might have a negative impact on smaller communities.

### **Preferred Option CS 12 – Resource Efficiency**

The Luton Forum supported the general principles. However, there was a strong reservation that this section was not as detailed as others and that, in order to be consistent, more detail was required in this section. There was a strong view that this section should include a clearer commitment to tackling Climate change, and that this underpins a lot of the proposals included.

### **Preferred Option CS 13 – Mitigating Flood Risk**

Luton Forum supports Preferred Option CS 13.

### **Preferred Option CS 14 – Green Infrastructure and Green Space**

Luton Forum supported Preferred Option CS 14, but suggested that more detail was required in this section, particularly about how these aspirations would be achieved. As many concerns might be addressed through the Green Spaces Strategy, it was suggested that a reference to the Strategy would be beneficial at this point, and that this would show a greater commitment to green infrastructure.

### **Preferred Option CS 15 – Countryside and Landscape**

Luton Forum supported Preferred Option CS 15, but suggested that more detail was required in this section

### **Preferred Option CS 16 – Heritage and Townscape**

Luton Forum supported Preferred Option CS 16

### **Preferred Option CS 17 – Biodiversity and Geology**

Luton Forum supported Preferred Option CS 17

**(Note: the meeting ended at 4.10pm)**

<b>LUTON FORUM</b>	<b>AGENDA ITEM 6</b>
<b>DATE OF MEETING:</b>	<b>10 September 2009</b>
<b>REPORT AUTHOR:</b>	<b>Sarah Allen, Inclusion and Cohesion Manager, Luton Borough Council</b>
<b>SUBJECT:</b>	<b>Draft Equality, Cohesion and Inclusion Statement and proposal to develop Equality, Cohesion and Inclusion Strategy for the Luton Forum</b>

## **PURPOSE**

To discuss with the Forum the adoption of a statement to underpin the development of a shared Equality, Cohesion and Inclusion Strategy to both help the Local Public Service Board and Luton Forum take account of the public sector equality duties to eliminate unlawful discrimination and to ensure the promotion of community cohesion and social inclusion through the delivery of action plans.

## **RECOMMENDATIONS**

**It is recommended that the Luton Forum:**

- 1. adopts the Equality, Cohesion and Inclusion statement.**
- 2. supports the development of an overarching Equality, Cohesion and Inclusion Strategy for the Luton Forum and approves nominated officers from partner agencies to work with Forum Equality, Cohesion and Inclusion Group members to develop this strategy**

## **BACKGROUND**

- 1. As well as the legal requirement of the Equality Standard for Local Government, the Luton Forum has identified Equality, Cohesion and**

Inclusion as the principles that underpin its work through the Sustainable Community Strategy (SCS) and the Local Area Agreement (LAA).

## **REPORT**

2. The Luton Forum Equality, Cohesion and Inclusion Group considered a draft Equality, Cohesion and Inclusion statement at its meeting on the 29 June 2009. This statement is attached at Appendix 1. The statement refers to the need for local authorities and their partners to be aware of the public sector equality duties to take active steps to eliminate unlawful discrimination, and to promote equality and cohesion between different groups.
3. In addition, an Equality Assessment Toolkit for Local Area Agreements has been published. This toolkit provides a basic set of challenging questions to assist local strategic partnerships and the Government Offices for the Regions to assess the extent to which equality and cohesion issues are considered and incorporated into their Local Area Agreement (LAA) see Appendix 2
4. It is envisaged that the toolkit will provide a framework for developing a shared Equality, Cohesion and Inclusion Strategy amongst partners and support the delivery of the LAA and SCS.
5. It is proposed that a working group be established by the Equality, Cohesion and Inclusion cross cutting group of the Forum to develop the draft strategy for consideration and adoption by the Luton Forum.
6. To ensure that this strategy reflects priorities and meets the requirements of all partners, it is requested that partners nominate representatives to link and work with this group as the strategy is developed.
7. It is intended that a draft strategy will be produced early in 2010 and final sign off will be no later than March 2010.
8. The Equality, Cohesion and Inclusion Group will report progress to future meetings of the Luton Forum.

## **Draft LSP Equality, Inclusion and Cohesion Statement Amended and approved at Forum EIC mtg 29-06-09**

The Luton Strategic Partnership (LSP) is committed to equality, inclusion and cohesion in its role as the key co-ordination body serving Luton's communities. All partners - public, private, voluntary and community alike are dedicated to this aim.

The LSP sees its role as valuing diversity and promoting equality, inclusion and cohesion in the borough. The primary aim of the Local Strategic Partnership is to improve the quality of life for all those living, working and learning in the borough and this can only be achieved through equality of opportunity for all.

In achieving this aim the LSP will ensure that any decision or action it takes has regard for race, age, gender, sexuality, disability, and religion, faith and belief, no religious affiliation and socio-economic disadvantage.

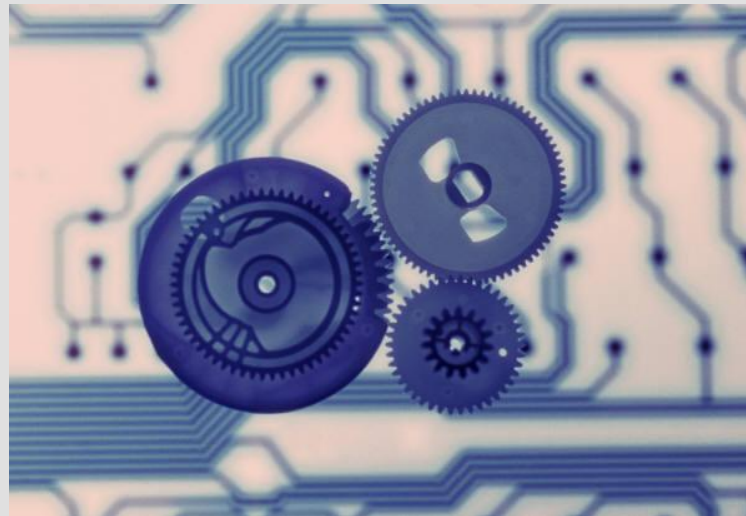
The LSP's commitment to **equality, inclusion and cohesion** builds on the statements of the individual partner organisations and their responsibilities under relevant equalities legislation and inclusion and cohesion requirements as set out in their respective policies and equality schemes.

The next step will be for the statutory partners of the LSP, in collaboration with the community and voluntary sectors, to produce a joint **equality, cohesion and inclusion strategy** for the LSP.

### **Equality, Cohesion and Inclusion Objectives**

- 1.** Promote and share best practice in equality, cohesion and inclusion across statutory partners, voluntary and community sector organisations – in relation to service design and delivery, staff training and development, consultation and communication
- 2.** Support the long-term engagement of all sections of the community and community groups
- 3.** Scrutinise policies for their impact on reducing discrimination and promoting equality, cohesion and inclusion
- 4.** Ensure that public, voluntary and private sector organisations work in partnership to achieve shared strategic objectives
- 5.** Facilitate better co-ordinated and more strategic consultation by public agencies with community organisations and other groups in order to promote access to services and resources
- 6.** Monitor performance against the key performance indicators selected by the partnership

# **EQUALITY ASSESSMENT TOOLKIT FOR LOCAL AREA AGREEMENTS**



# THE EQUALITY ASSESSMENT TOOLKIT

## PURPOSE OF THE TOOLKIT

To provide a basic set of challenging questions that will assist Locality Managers and the Government Offices for the Regions to assess the extent to which equality issues are considered and incorporated into their Local Area Agreement (LAA). This should provide a framework for developing a shared equality strategy amongst partners and support the negotiation of the LAA.

This toolkit incorporates key lessons learnt and the best practice principles gathered in the recent review '**Promoting Race Equality and Community Cohesion through Local Area Agreements**' which the CRE (West Midlands Hub) and Race Equality West Midlands undertook in association with the Government Office for the West Midlands.

Effective community involvement and equality strategies require time, resources and skilled professional support, and the implementation of this framework will add value through:

- Improved decision-making
- Making use of the communities own knowledge, energy and enthusiasm
- Promoting equality and access for all members of the LAA
- Developing long-term commitment and ownership
- On-going evaluation and learning
- Strengthening community networks and organisations which the LAA partners can rely on for future initiatives
- Providing challenging questions on equality issues to which the LAA partners and Government Office should respond.

## EQUALITY ASSESSMENT TOOLKIT FOR LOCAL AREA AGREEMENTS

<b>Name of Local Area Agreement:</b>			
	<b>Yes</b>	<b>No</b>	<b>Comments</b>
<b>Does the LAA have a shared equality statement/vision/policy that gives due regard to disability, race, age, and LGBT issues, to be achieved through the implementation of the LAA?</b>			
<b>Has this been agreed by all partners?</b>			
<b>What processes are in place to assess and monitor progress of this and to whom will it be reported to?</b>			

<b>Has the development of the LAA considered :</b>				
	<b>Yes</b>	<b>No</b>	<b>Comments</b>	<b>Evidence</b>
<b>The current demographics of the area?</b>				
<b>Potential changes (over the next 5 years)?</b>				
<b>How evidence is collected, collated and analysed by partners on the communities they serve and the impact of their services?</b>				
<b>How is this evidence used to plan and manage services?</b>				
<b>How is this evidence used to develop targets/ indicators and monitor progress?</b>				

<b>Has the partnership specifically considered the following in developing the LAA:</b>				
	<b>None</b>	<b>Some</b>	<b>Considerable</b>	<b>Comments</b>
<b>Past and current community tensions in the local area?</b>				
<b>Neighbourhoods on which to focus community-cohesion building initiatives?</b>				
<b>Development and capacity building of appropriate local organisations which could assist with developing and improving community cohesion?</b>				

<b>Equality Duties:</b>	<b>Yes</b>	<b>No</b>	<b>Comments</b>	<b>Evidence</b>
<b>What action are the partners taking to promote the equality duties within the LAA?</b>				
<b>What action are the partners taking to promote good community relations including positive attitudes of all sections of the community?</b>  <b>What action are partners taking to promote participation of disabled people in public life?</b>				
<b>What actions are being taken to promote community cohesion?</b>				
<b>Whether changes are required to existing strategies which deal with equality?</b>				
<b>Whether differentiated indicators or targets exist on equality issues relating to the various elements of the LAA?</b>				

<p><b>What is the level of detrimental impact of the policies/ strategies/ actions to be undertaken through the LAA?</b></p>				
<p><b>What action is being taken to resolve this or minimise the risk and by whom?</b></p>				
<p><b>How will the impact be monitored, reviewed and reported?</b></p>				
<p><b>Whether all partners have the skills and capacity to realise an evidence-based analysis of local communities, including current and future demographic change?</b></p>				
<p><b>Whether partners are aware of the limitations of current data or are developing proxy data to develop targets and indicators?</b></p>				

**What evidence is there that the LAA will contribute in any substantial or focused way in meeting the legal duties under the Race Relations (Amendment) Act 2000, Disability Act 1995 and the Sex Discrimination Act:**

	<b>Comments</b>	<b>Evidence</b>
<ul style="list-style-type: none"> <li>• To work towards the elimination of all forms of discrimination?</li> </ul>		
<ul style="list-style-type: none"> <li>• To promote equality of opportunity?</li> </ul>		
<ul style="list-style-type: none"> <li>• Eliminate gender and disability related harassment?</li> </ul>		
<ul style="list-style-type: none"> <li>• To promote good relations between groups?</li> </ul>		
<ul style="list-style-type: none"> <li>• Has the partnership considered how the development of the LAA could lead to a greater alignment of their equality objectives/targets/schemes/policies?</li> </ul>		

<b>Involvement &amp; Consultation</b>	<b>Yes</b>	<b>No</b>	<b>Comments</b>	<b>Evidence</b>
<b>What consultation mechanisms are in place to engage the view of communities and organisations within the LAA process?</b>				
<b>Are the methods used for consultation, within the LAA, inclusive and accessible?</b>				
<b>Are minority or dissenting views actively sought out and considered in the LAA?</b>				
<b>Are there arrangements within the LAA for ongoing dialogue with the diverse communities?</b>				
<b>How is local knowledge and expertise used in the LAA decision-making process?</b>				
<b>How will diverse communities be involved in setting target priorities and assessing progress for the LAA?</b>				

<b>Involvement &amp; Consultation</b> (cont'd)	<b>Yes</b>	<b>No</b>	<b>Comments</b>	<b>Evidence</b>
<b>Does the LAA contain any indication of how the following individuals/groups have been consulted in drawing up and monitoring the LAA?</b>				
<b>Voluntary sector organisations?</b>				
<b>Equality organisations (Race, Disability, Age, LGBT, Gender)?</b>				

<b>Has the LAA process stimulated any specific areas for Partnership Development/Improvement:</b>			
<b>Area</b>	<b>Yes/Comments</b>	<b>No/Comments</b>	<b>Agreed By</b>
<b>Community involvement?</b>			
<b>Measurement of community cohesion and equality?</b>			
<b>Assessment and analysis of specific community needs?</b>			

<b>Development/improvement of the Evidence base: Community profiles, and data sets?</b>			
<b>Monitoring and evaluation of LAA's?</b>			
<b>Impact assessments?</b>			
<b>Priority setting?</b>			
<b>Due regards to <u>all</u> equality legislation?</b>			
<b>Consultation mechanisms?</b>			

<b>LUTON FORUM</b>	<b>AGENDA ITEM 7</b>
<b>DATE OF MEETING:</b>	<b>10 September 2009</b>
<b>REPORT AUTHOR:</b>	<b>Sarah Allen, Inclusion and Cohesion Manager, Luton Borough Council / Yana De Silva, Communications Manager, Luton Borough Council</b>
<b>SUBJECT:</b>	<b>Luton in Harmony</b>

**PURPOSE:**

To secure support from the Luton Forum and its members for a forthcoming project to be known as 'Luton in Harmony'

**RECOMMENDATIONS:**

**It is recommended that**

- 1. the Forum agrees to the principles and actions of the Luton in Harmony projects as outlined at Appendix 1**
- 2. partners commit to supporting the Luton in Harmony aims and objectives**

**BACKGROUND:**

9. Luton has enjoyed a diverse population for many decades. 35% of Luton's population is from BME communities (rising to 60% of our school age population).
10. Over recent months there have been a number of events that have presented challenges to community cohesion with regards to relationships between different ethnic groups in Luton. This has not been helpfully reported by the national and, sometimes, local media. Indeed it could be argued that Luton has not enjoyed a positive image through both the national and local media for some time.
11. Despite these challenges, the results of the 2008 Place survey tell us that 73% of residents agree that '*...the local area is a place where people of different backgrounds get on well together*'. Results of the 2009 Fear of Crime survey show 84% agreeing with this statement.

## **REPORT**

12. Luton in Harmony is an attempt to put the record straight in Luton, to celebrate the positive relationships that exist between people of different backgrounds and to unite local people in a celebration of all that is good about the town. Further details are attached at Appendix 1
13. Luton in Harmony will be coordinated through the Communications Unit at the Council. Success of this project will be enhanced if all partners agree and sign up to, the pledge and associated actions that will form a part of this initiative.

## Luton In Harmony – Project Outline

### LUTON IN HARMONY

#### **The Challenge**

Our community, and indeed the world has its eyes upon Luton and we are in desperate need of a focus to inspire local people, unite them in a common goal, and encourage them to take pride in their town and their community. We require a united front to protect us in our efforts to marginalise extremist influences both from Islamist groups who have undermined mainstream Muslim voices on the one hand and organised racist, extremist groups who try to take advantage of any instability they see on the other.

#### **Project Description**

Luton in Harmony is not just another campaign designed to promote community cohesion. This is an inspirational, innovative campaign aimed at drawing the community together and strengthening the message that we will challenge violent extremist ideology wherever it comes from and will support our community where it seeks to promote, strengthen, support and give voice to a celebration of diversity rather than viewing it as a weakness.

Various groups around Luton are committed to challenging violent extremism such as the Police, The Luton Council of Faiths, The Luton Council of Mosques, Love Music Hate Racism and more.

Alone these groups are achieving a great deal but there is a danger of their total effectiveness and therefore their message being lost or being dissipated among diverse groups who may be unaware of collective strengths to be gained by working together. They will be strengthened if projects can be delivered under a collective banner which raises awareness and draws in other areas of the community where voices are not heard, such as schools, youth groups, concerned mothers groups etc. Our approach joins them together to sing a united song with one far-reaching voice.

Luton Borough Council needs Luton in Harmony to be that banner, acting as a catalyst, pulling our community together. It will kick off with an event with a pledge from all groups committed to the same idea. An inspirational enamel badge will be handed out and link all groups together under the banner of Luton in Harmony. A website will be developed and linked to the Council's website to draw together all projects and provide information on what is happening around the borough. This website will have message and discussion boards aimed at creating maximum dialogue between groups and initiatives. Dignitaries and ambassadors for Luton in Harmony will be found across the borough - including celebrities - and encouraged to wear the badge as a symbol of their determination to be a part of our Unity in Harmony and to speak out and up in support of our town.

Focus groups will be created amongst vulnerable groups - children, young men and women, to create the powerful images which will be put up around the borough to promote the message that Luton is working together to live in harmony.

A presence will be kept at all main events - Luton Mela and Carnival, Community Engagement events.

Schools will be issued with the images and encouraged to write articles on what Luton in Harmony means to them - these will be used in the Council's main newsletter which

is distributed to more than 72,000 households.

People will be encouraged to debate 'hot topics' in safety - and debate encouraged. We will work with Adult Community Learning to train up community mediators able to host debates and discussion groups to provide people with the opportunities to engage and debate in a positive fashion whilst also addressing myths and stereotypes perpetuated by extremist groups.

Attractive posters and leaflets with advice on where to get more information will be made available to GPs and health centres - to our partners including the Police who have regular contact with local residents and also to our traders associations to display in their shops.

The media will be encouraged to adopt the campaign and follow through by attending events and seeing Harmony in progress - they will be challenged to write about the positive rather than the negative and to support the town.

Luton in Harmony is a driver for change and action. It will encourage groups to continue their work but more importantly it will spread the message that each person makes a difference - and each person in our town is part of our town and our community. Personal responsibility without fear of attack, reprisal or intimidation should be the norm and will be considered the norm as we progress through this project.

The bid addresses: capacity building of individuals and organisations; strengthening mainstream voices; creation of a local forum for communities to share their opinions on extremism and grievances.

Activity	Timescale / Deadline
Newspaper and magazine full page advertising	1 <sup>st</sup> week of every month
Lifestyle magazine	full page monthly
Ethnic radio	regular adverts Oct, Dec, March
Web advertising	4x one month Sept, Dec, March
Screens in Luton Mall	4x one month Sept, Nov, Jan, March
Lampost Banners	4x one month Sept, Nov, Feb, March
Internal advertising on buses	2x four weeks Sept and Feb
External advertising on buses	2x four weeks Sept and Feb

Outdoor advertising hoarding	3 x two weeks Sept, December, March
Pledge signing event and badge Tshirt issuing	September
Items to be used throughout life of campaign	A4 Posters, Leaflets, Posters for Customer Services Centre, Pin Badges Tshirts, Pop up Display Stand, Balloons
'Hot topics' debating and community Mediation Training	October, March

### How we will measure if the project has achieved its aims?

Our media monitoring will aim to see a change in the nature of the articles and interviews being carried out about Luton. We further expect to see a drop in the number of "interactive" websites where dissidents are encouraged to go to Luton for marches etc, such as Facebook.

Luton will become unattractive to groups who seek to gain a foothold to air their bigoted views - when they realise that our cohesive community does not welcome them and will show them the door.

The number of local groups and schools who sign up to the pledge and take part in activities, and come up with ideas to continue sharing their views on Luton in Harmony.

Community Dialogue and Debates will be evident on regular basis and myths and stereotypes reduced as Luton achieves a positive image in the local and national community.

It is expected that if the campaign is successful it will be possible to attract local sponsors such as Luton Town Football Club and other local businesses and organisations. The council commits to continued input into this programme from range of staff including specialist Communications officers

<b>LUTON FORUM</b>	<b>AGENDA ITEM 8</b>
<b>DATE OF MEETING:</b>	<b>10 September 2009</b>
<b>REPORT AUTHOR:</b>	<b>Jenny Coles, Head of Area Integrated Services, Luton Borough Council</b>
<b>SUBJECT:</b>	<b>Child Poverty Bill and likely Local Authorities' and Partner Agencies' Statutory Responsibilities</b>

## **PURPOSE**

This paper provides background to the new Child Poverty Bill which is currently going through government. It makes partners aware of the likely requirements of the Bill will have on Local Authorities and its partners in responding to the national target of reducing child poverty by 2020.

## **RECOMMENDATIONS**

It is recommended that the Luton Forum:

- (1) **Takes note of the requirements of the Child Poverty Bill that are likely to become enshrined in law by April 2010.**
- (2) **Agrees the establishment of a multi agency working group across the local strategic partnership which will be responsible for undertaking the child poverty needs assessment and developing a local strategy and action plan.**
- (3) **Agrees that this multi agency working group is accountable to the Local Public Service Board and then to the Luton Forum but also presents regular reports to the Luton Children and Young People's Trust Board.**

## **BACKGROUND**

### **National policy and targets**

1. Government has committed to accelerate action towards meeting the 2020 target of reducing child poverty.

2. The national Public Service Agreement (PSA) target is to halve the number of children in poverty measured by the number of dependent children who live in households whose equivalised income is below 60% of the contemporary national median (NI 116 also known as relative low income indicator).

### **Government vision and strategy**

3. Government's 2020 vision aims to ensure that :
  - Poverty in childhood does not translate into poor experiences and outcomes (education and health)
  - More families are in work that pays *and* have the support they need to progress (quality childcare, employment and adult skills)
  - Financial support is responsive to families situations (in and out of work benefits)
  - A child's environment supports them to thrive (housing and neighborhoods)
4. The proposed Government strategy for tackling child poverty is to guarantee :
  - Work for those that can and financial support for those who cannot ,
  - Financial support that is responsive to families needs in terms of in and out of work benefits
  - That material deprivation is tackled e.g. housing and persistent poverty
  - That life chances for children are improved, so that poverty in childhood does not translate into poor outcomes
  - That safe and cohesive communities are created and sustained that support children and young people to thrive

### **IMPLICATION FOR PARTNERS**

#### **Child Poverty Bill - new duties for Local Authorities and its partners.**

5. Government sees that Local Authorities and their delivery partners have a vital role in supporting their vision and delivering many of the strategic building blocks to tackle child poverty.
6. As providers of services to children, young people and families, local authorities and their partners have a major part to play in narrowing the gaps in outcomes between children from low income families and their peers, and in preventing and breaking inter-generational cycles of deprivation.
7. They can do this principally through driving regional economic performance and sustainable growth; creating prosperity and employment, poverty proofing their policies and, importantly, ensuring that parents are given meaningful options, and are enabled through these, to parent and judge what is best for their children.
8. Local authorities can and should provide leadership within Local Strategic Partnerships in tackling child poverty and facilitating creative local solutions tailored to local circumstances. Example considerations are:
  - Key role of School Improvement in narrowing the gap

- Fair admissions re access to "good" schools
- Improving access to decent and affordable housing,
- Promoting wellbeing, community and social cohesion and inclusion
- Preventing wherever possible, and breaking where it already exists, intergenerational cycles of deprivation and low aspiration

9. The Bill is sponsored by the Department for Children, Schools and Families, the Department for Work and Pensions and Her Majesty's Treasury.

### **Government's responsibilities**

10. The Bill's purpose is to 'define success in eradicating child poverty and create a framework to monitor progress at a national and local level'. It:

- Establishes **four child poverty targets** to be met by 2020/21, based on a relative low income measure, a low income measure fixed in real terms, a combined low income and material deprivation measure, and a 'persistent poverty' measure
- Requires the UK Government to **publish a UK child poverty strategy**, which must be revised every three years. The strategy will set out the policies that will be put in place to meet the targets
- Establishes a **Child Poverty Commission** to provide advice on the development of the child poverty strategies
- Requires the UK Government to publish **annual progress reports**.

11. **Duties on local authorities and other 'delivery partners' in England to**

- i. work together to tackle child poverty,
- ii. conduct a local child poverty needs assessment,
- iii. produce a child poverty strategy and
- iv. take child poverty into account in the production and revision of their Sustainable Community Strategies

12. The Comprehensive Area Assessment will be the mechanism whereby local authorities will be assessed on how they and their partners are working together to tackle childhood poverty.

### **LOCAL WORK TO DATE**

13. In Luton N1 116 – Proportion of Children in Poverty - was not chosen as a Local Area Agreement (LAA) target, however Luton does have a number of LAA targets that are associated with childhood poverty including;

- NI 117 - number of 16-17 years olds who are not in employment, education or training (NEET)
- NI 112 - Under 18 conception rate

14. There are also a wide range of other indicators that can act as a proxy for childhood poverty across the LAA theme blocks.

15. The Performance Management sub group of the Children and Young People's Trust has already begun to map relevant data across the Children's Trust. Furthermore, the Performance Management sub group of the Luton Forum (LSP) has now been requested to support this, by conducting a data collection exercise to map a wider range of proxies' indicators that can be used as part of the basket of indicators for child poverty. This work should be completed by September 2009.
16. In addition, the "Total Place" theme for Luton and Central Beds is "From Dependence to Self Reliance" which clearly resonates with issues of benefits/child poverty.
17. Kevin Crompton has recently identified three representatives to attend a national conference on Childhood Poverty in September 2009. Jenny Coles, Head of Integrated Services Children and Learning LBC, Sarah Allen, Inclusion and Cohesion Manager in Corporate LBC and Stephanie Cash, Partnership Commissioning Manager will represent Luton at this event.

<b>LUTON FORUM</b>	<b>AGENDA ITEM 9</b>
<b>DATE OF MEETING:</b>	<b>10 September 2009</b>
<b>REPORT AUTHOR:</b>	<b>John Harper, Head of Local Democracy, Luton Borough Council</b>
<b>SUBJECT:</b>	<b>Reference from Luton Borough Council Executive – Luton Equalities Agency</b>

**PURPOSE**

The purpose of this report is to refer to the Local Strategic Partnership a recommendation of the Executive with regard to the Luton Equalities Agency.

**RECOMMENDATIONS**

**It is recommended:**

**That the Local Strategic Partnership be requested to investigate the matter of the Luton Equalities Agency and report back to the Regeneration and Citizenship Scrutiny Committee**

**BACKGROUND**

1. The Executive at their meeting held on 1 June 2009 considered a report of the Chief Executive (Head of Local Democracy) which referred a decision of the Regeneration and Citizenship Scrutiny Committee (attached at Appendix A to this report).

**REPORT**

2. The Executive then agreed the following recommendation(s) (EX/103/09).

"(i) That the recommendations of the Regeneration & Citizenship Scrutiny Committee held on 16<sup>th</sup> April 2009 that the Executive:

- (a) investigate what, as seems apparent, went wrong with the implementation of the recommendations of the feasibility study to develop the Luton Equalities Agency, by the Luton Forum;
- (b) investigate who was responsible for making the decision not to release the funding of £150K budgeted for in previous financial years;
- (c) find out what the £150,000 had been allocated for;
- (d) make all endeavours to identify and recruit Trustees to serve on the Luton Equalities Agency;
- (e) immediately identify emergency funding to ensure that the Luton Equalities Agency was able to continue to operate; and
- (f) immediately identify two part funding under the Service Level Agreement (SLA) for:
  - funding to directly kick-start the project.
  - funding for sustainability based on satisfactory performance by the Agency;be noted.

(ii) That the matter be referred to the Local Strategic Partnership for investigation and report back to Regeneration & Citizenship Scrutiny Committee."

## **LEGAL IMPLICATIONS**

As set out in Appendix A

## **FINANCIAL IMPLICATIONS**

As set out in Appendix A

## **APPENDIX**

Appendix A - Executive report 'Reference from Regeneration & Citizenship Scrutiny Committee – Luton Equalities Agency'

### **LIST OF BACKGROUND PAPERS LOCAL GOVERNMENT ACT 1972, SECTION 100D**

Committee Report Ref: EX/6/09/6.3

Executive Decision No. EX/103/09

*EXECUTIVE*

**DATE:** 1<sup>ST</sup> JUNE 2009

**SUBJECT:** REFERENCE FROM REGENERATION AND CITIZENSHIP  
SCRUTINY COMMITTEE - LUTON EQUALITIES AGENCY

**REPORT BY:** CHIEF EXECUTIVE (HEAD OF LOCAL DEMOCRACY)

**CONTACT OFFICER:** EUNICE EMUOPHE 01582 547149

**IMPLICATIONS:**

**LEGAL** ✓ **STAFFING**  
**EQUALITIES** ✓ **COMMUNITY SAFETY**  
**FINANCIAL** ✓ **RISKS**

**OTHER**

**CONSULTATIONS:**

**COUNCILLORS CONSULTED** **SCRUTINY COMMITTEE  
CONSULTED**  
**STAKEHOLDERS CONSULTED** **OTHER**

---

**WARDS AFFECTED:** ALL

**LEAD EXECUTIVE MEMBER(S):** COUNCILLOR SIMMONS AND BAILEY

---

**RECOMMENDATION(S)**

1. Executive is recommended to consider the recommendations of the Regeneration and Citizenship Scrutiny Committee, held on 16<sup>th</sup> April 2009, regarding Luton Equalities Agency, referred to at Paragraph 13 below.

**REPORT**

2. In March 2005, a Feasibility Study on an Equalities Agency was produced on behalf of the Luton Forum and the Luton Equalities Agency was then set up as a direct result.

3. At its meeting held on 16<sup>th</sup> April 2009, Regeneration and Citizenship Scrutiny Committee considered a report by the Head of Equalities on what had happened following the Feasibility Study.
4. The Committee heard that the study took over a year and finally established the need for an independent Equality Agency to support individuals experiencing unfair discrimination due to their race, gender, disability, age, sexual orientation, and religion/faith.
5. The Equality Agency was awarded £6030 for the grant year 2007/8 by the Council, which was subject to a number of conditions including;
  - (i) The satisfactory establishment of a representative Board of Directors and a widely based Board of Trustees and members who represent and can deliver on all six legislative strands of equality;
  - (ii) Achievement of all year 1 stated objectives.
6. A condition for future funding by the Partnership was the development of a robust business plan that would demonstrate how the Agency would meet the principles set out in the Feasibility Study and become financially sustainable in future years.
7. The Committee further heard that the Equality Agency had approached Luton Forum for funding.
8. The Forum expressed reservations as to whether the business plan submitted by the Equality Agency was sufficiently robust and expressed concerns about whether the focus on the principles of the Feasibility Study would be maintained.
9. The Forum concluded that the business plan submitted was an aspirational document and did not fully outline how the Agency would become self sufficient or sustainable. It outlined costs rather than income.
10. In the Council's budget for 2008-09, a growth item of £50k was allocated for the Equalities Agency with ongoing funding of £100k in subsequent years, however, the Equality Agency did not receive this because of the lack of a robust business plan.
11. In November 2008, the Equality Agency advised the Council that they were in debt to the sum of £5000 in rent plus telephone bills and asked if the Council would provide a Grant to meet these expenses.
12. At the meeting on 16<sup>th</sup> April 2009, the Equality Agency representative informed the Committee that it was clear that the Agency required more support and funding in order to function effectively, instead they had received instructions from the Portfolio Holder and the Council's Head of Equalities to close down the Agency.
13. The Regeneration and Citizenship Scrutiny Committee resolved:

(NOTE: The Committee was advised that the funding was £150k. Subsequent to the meeting, this figure was corrected to £50k for 2008-09 and £100k for 2009-10)

(i) That the Regeneration and Citizenship Scrutiny Committee requests the

Executive:

- a. To investigate what, as seems apparent, went wrong with the implementation of the recommendations of the feasibility study to develop the Luton Equalities Agency, by Luton Forum;
- b. To investigate who was responsible for making the decision not to release the funding £150K budgeted for in the previous financial year 2008/09;
- c. What was the £150K funding allocated for?
- d. To make all endeavours to identify and recruit Trustees to serve on the Luton Equalities Agency;
- e. To immediately identify emergency funding to ensure that the Luton Equalities Agency is able to continue to operate.
- f. To immediately identify two part funding under the Service Level Agreement (SLA).
  - Funding to directly kick-start the project.
  - Funding for sustainability based on satisfactory performance by the Agency;

(ii) That the Executive decision be reported back to the Regeneration and Citizenship Scrutiny Committee or its successor after the re-structure of scrutiny committees. [Minute 21/09 (ii) and (iii)]

## **LEGAL IMPLICATIONS**

14. There are no legal implications to this report as agreed with Brenda Vale in Legal Services on 14 May 2009.

## **EQUALITIES IMPLICATIONS**

15. The feasibility study commissioned by the Luton Forum in 2005 established the need for an independent Equality Agency to support individuals experiencing unfair discrimination due to their race, gender, disability, age, sexual orientation and religion/faith and to work with local public sector organisations to help them meet the requirements of equality legislation. An Equalities Agency was established in 2007, but work has been slow in recruiting a representative Board and in fact the majority of Board Members recruited had since resigned. There is now an urgent

need to review the work of the Equalities Agency in light of the feasibility study recommendations and secure the involvement of other public body partners in moving the work of the Agency forward.

## **FINANCIAL IMPLICATIONS**

16. (Please note that this information was supplied subsequent to the meeting of the Scrutiny Committee)

There is no provision within the Council's budget for 2009/10 for financial support to the Luton Equality Agency. The Board of London Luton Airport Limited has included the Luton Equality Agency within its programme of Gift Aid, payment of which is to be withheld subject to the Board being assured that the issues identified by the Luton Forum have been resolved to the satisfaction of its majority shareholder. These implications were agreed by the Finance and Airport Client Manager on 11<sup>th</sup> May 2009.

## **OPTIONS**

Executive can either:

- Accept the recommendations of the Regeneration and Citizenship Scrutiny Committee.
- Note the recommendations of the Regeneration and Citizenship Scrutiny Committee.
- Modify the recommendations of the Regeneration and Citizenship Scrutiny Committee.

## **BACKGROUND PAPERS**

Committee Report R&CS/4/09 – 10  
Minute No. R&CS/21/09

<b>LUTON FORUM</b>	<b>AGENDA ITEM 14</b>
<p><b>DATE OF MEETING:</b> 10 September 2009</p> <p><b>REPORT AUTHOR:</b> Bren McGowan, LSP Manager</p> <p><b>SUBJECT:</b> LSP Manager's Report</p>	

**PURPOSE**

This report gives members an update on issues not covered elsewhere on the agenda.

**RECOMMENDATIONS**

**It is recommended that the Luton Forum notes the report.**

**REPORT**

**Migration Impacts Fund**

1. Luton has been successful in attracting £272,500 from the Migration Impacts Fund in 2009/10, with a provisional allocation of £317,000 for 2010/11. A detailed proposal will be presented to the Local Public Service Board on 17 September 2009.

**Neighbourhood Governance**

2. Work is continuing on the Neighbourhood Governance pilot in Luton West. A series of Community Planning events are being held in Leagrave, Lewsey and Challney in September and October.

**LSP and LAA Network**

3. A meeting of the LSP and LAA Network based on 'Sharing Good Practice' will be held at the Trinity Centre in Cambridge on Wednesday 16 September. The agenda include 'Two Tier Working', 'the Sustainable Communities Act' and 'Total Place'.

The event is free (although there is a charge for places booked and not used), and places should be booked with Amanda Ankin at the East of England Regional Assembly (tel: 01284 729403 - [amanda.ankin@eera.gov.uk](mailto:amanda.ankin@eera.gov.uk))

Dates for 2010 are:

Wednesday 20 January

Tuesday 27 April

Tuesday 20 July

Wednesday 13 October