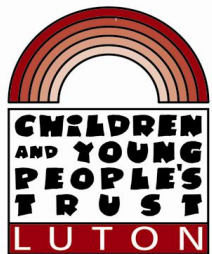


Children and Young People's
Block Debbie Jones - Chair
Children & Young People's Trust
16th July 2009



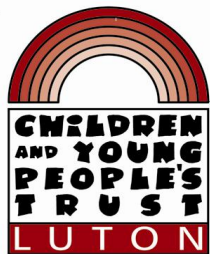
What have we achieved together

- Positive Joint Area Review (JAR) 2007
 - “ the partnership provides good strategic leadership and there is good partnership working which has delivered significant change, demonstrating outstanding ambition and good prioritisation”
- 11 out of our 15 LAA targets are green.



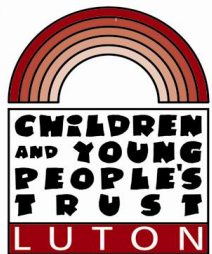
Many links to other theme blocks

- Repeat incidents of domestic violence.
- Perceptions that people in the area treat one another with respect.
- Smoking rates prevalence.
- Overall employment rates.
- To name a few



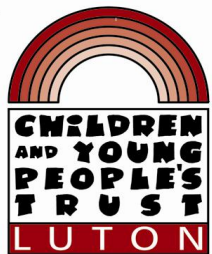
Some key achievements

- Significant improvements in Children and Adolescence Mental Health Services.
- Education attainment improving and narrowing the gap.
- Early intervention provision for children and young people and their families established and operating effectively.
- Improved interagency working –e.g. children and young people with disabilities – new Child Development Centre at Marsh Farm
- Established and agreed with all partners governance arrangements across the Children and Young People's Trust.



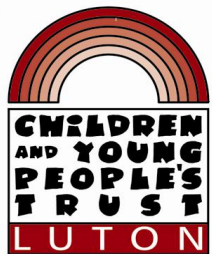
Still more to do

- Implement new statutory guidance on Children and Young People's Trust Arrangements
- In particular, continue to strengthen our working together
 - with agencies that deliver primary services to children and young people
 - across the Local Authority and with other partners whose business impacts on children and young people
 - across the LAA theme blocks to deliver on cross cutting themes
- Strengthening joint commissioning arrangements across the Children and Young People's Trust .



Some key challenges

- Highest percentage of children and young people in the EOE
- High percentage of children under 5 years in England
- Fifth highest birth rate in England
- High number of children and young people with disabilities
- Child Well Being Index - Luton comes 291 out 353
 - Housing
 - Crime
 - Environment
 - Children in number
 - Material wellbeing
 - Health and disability
 - Education



Tackling childhood obesity together

What we know

- Although on target still a major public health issue with massive
- implications for NHS
- Highest rates of obesity in the EOE
- One in five children in year 6 obese.

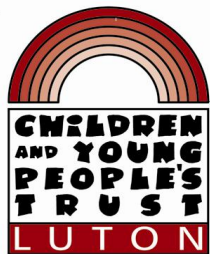
What are we doing ?

- Multiagency action plan and strong partnership working.
- Running a wide range of pilot programmes but only touching the tip of the iceberg.



What are the challenges and what else do we need to do ?

- No new investment !! – need to look at commissioning decisions
- Recognise the longer term implication of obesity not only on NHS but wider partners in terms of sickness at work, benefits and use of services.
- Need to work together on public awareness campaigns



Bullying and helping children and young people feel safer

What we know

In most cases, Luton is similar to national averages.

- 60% said that they had never been bullied at school, compared with 56% nationally.
- 80% said that they had never been bullied somewhere else compared with 75% nationally.

But this means

- 40 % have been bullied in school
- 20% have been bullied out of school

Also

- 35% public transport a higher proportion of children and young people in Luton said they did not feel safe
- Those with disabilities experience more bullying and more frequent incidents of bullying both in and out of school



Key points for partners

What are we doing ?

- Developed multiagency strategy for helping children and young people feel safe launched antibullying week with conference.
- Conducted anti bullying survey to further inform action planning
- Established new strategic group accountable to the Luton Safeguarding Childrens Board.

What are the challenges and what else do we need to do ?

- Multiagency response needed
- Links to a range of other targets



Positive activities for young people

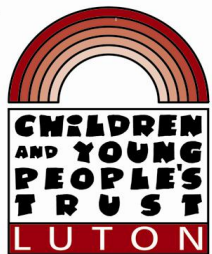
What we know

66% respondents said they had participated in any group activity in last 4 weeks

- Regional comparator 73.3%
- Nationally comparator 68.4%

But this means 33% are not participating

- Links to anti social behaviour
- And adults perceptions of young people in the area



Key points for partners

What are we doing ?

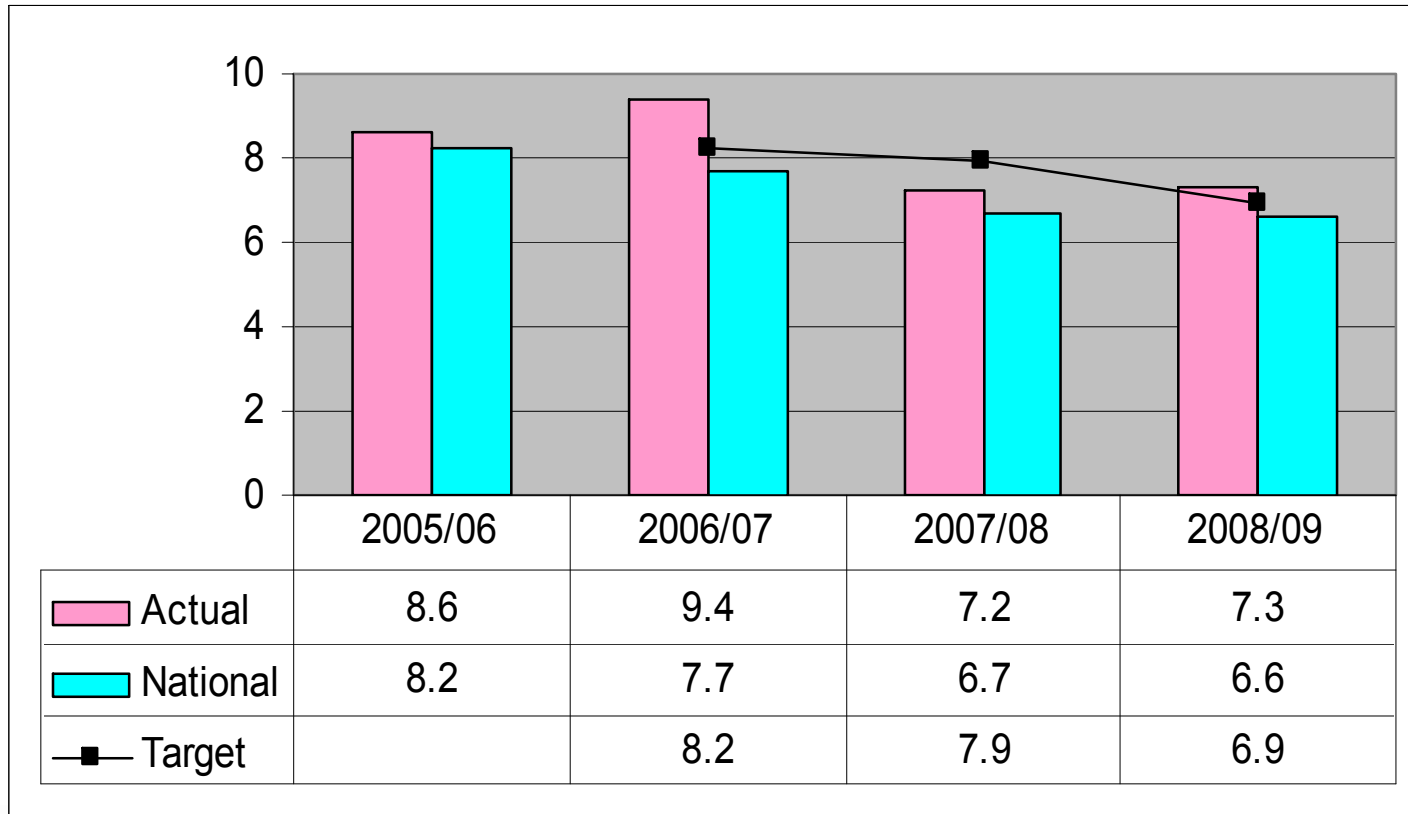
- Consultation with young people
- Strengthening communications to young people – use of web / text
- Delivering a wide range of play and extended school activities

What are the challenges and what else do we need to do ?

- Work together to improve perceptions of young people
- Work with partners to collate mapping of activities and opportunities.
- Concerns re data collection



Not in education, employment or training



Key points for partners

What we know

- Have been achieving targets and Luton is only LA where NEET figures are continuing to fall in the current economic climate.
- Multifaceted issue that can impact adversely on a range of other targets - housing, drugs and alcohol, under 18 conception rates etc.

What are we doing ?

- Undertaking case studies to identify themes and then target work particularly PRE NEET.
- Reviewing and Increasing specific targeted provision e.g. Economic Participation Project .

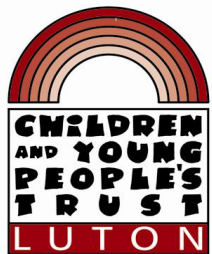


What are we doing ?

- Working with a wider range of partners including VCS and working in new neighbourhood areas for local provision.
- Consulting with young people regarding suitable provision.

What are the challenges and what else do we need to do ?

- Use economic intelligence effectively to skill up young people for local business.
- Preparing for the raising participation age.
- Ensure provision post 16 meets needs of young people.



For Further Information

Luton's Children and Young People's Plan

www.cypp.luton.gov.uk

Luton's Joint Strategic Needs Assessment

www.cypp.luton.gov.uk/go/jsna

Luton's Annual Public Health report

www.cypp.luton.gov.uk/go/publichealthreport

Needs assessment children and young people with disabilities

www.cypp.luton.gov.uk

Bullying survey

www.learning.luton.gov.uk/go/bullying

Tellus3 survey results

www.cypp.luton.gov.uk

